

MF 423-3-2D

SERIES



Features

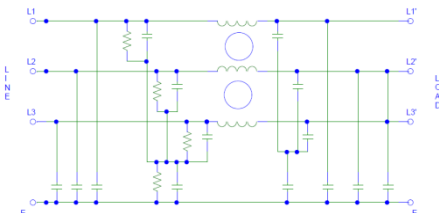
- Chassis Mount/Panel 3 Phase Filter 3 Wire
- General Purpose
- Compact
- Superior Performance
- Shock Proof Terminals

Application

- For UPS, Special purpose machines.
- Elevators
- CNC Machines
- HVAC
- Drives
- AC/DC Drives
- SCR Drives

Technical Specification

- Maximum Operating Voltage: 440/520*/600* VAC
- Operating Frequency: 50/60Hz
- Rated Current: 6A to 250A
- High Potential test voltage: L to G 2120VAC FOR 250V L to L 1414VDC FOR 250V
- Overload Capability: 6 x Rated current for 8sec
- Temperature Range :-25 °C to 85 °C
- Earth Leakage Current : 1 mA max (Also available in low leakage Current)



Presentation

Aluminium

Mounting

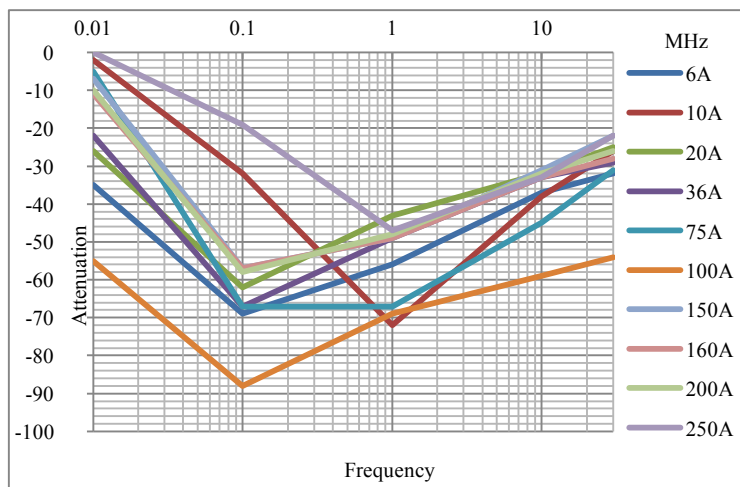
Screw Mount or Panel Mount

Termination

Shock Proof Connector/ Nut & Bolt

How to Order

Part No	Rated Current	Case	Termination
MF 423-3-2D	6A	R1	Shock Proof Connector
MF 423-3-2D-10	10A	R2	Shock Proof Connector
MF 423-3-2D-20	20A	R3	Shock Proof Connector
MF 423-3-2D-36	36A	R3	Shock Proof Connector
MF 423-3-2D-75	75A	R4	Shock Proof Connector
MF 423-3-2D-100	100A	R4	Nut & Bolt
MF 423-3-2D-150	150A	R4	Nut & Bolt
MF 423-3-2D-250	250A	R6	Nut & Bolt



** For Customised filter Contact our sales department