

Single Phase EMI Filter – MF140 IEC Inlet Type (Medical Version)

Description

These series range of filters with IEC Inlet are designed to suppress undesirable electrical disturbances in Power Lines. They limit the amplitude of interfering voltages on AC power lines and prevent them from propagating into or out of the filtered equipment.

Features

- Rated Current up to 16A
- Ultra-low leakage current
- High Conducted attenuation performance
- Excellent performance/size ratio

Applications

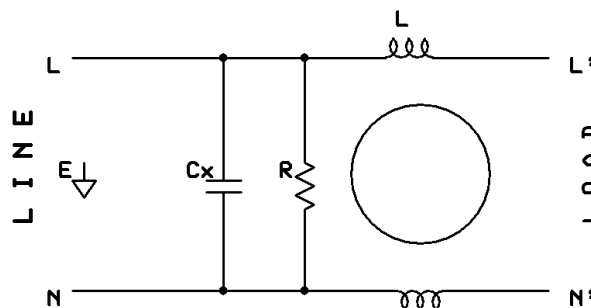
- Power Systems
- Electronic Equipment
- Frequency convertors
- Stepper motor drives
- UPS/Inverters



Safety Approval & Compliance



Typical circuit Diagram



Technical Specifications

Maximum Continuous Operating Voltage	: 250VAC
Operating Frequency	: 50/60Hz
Current ratings	: 1A to 16A @40°C
High Potential test voltage	: L to G 2250VDC for 1 Minute L to L 1450VDC for 1 Minute
Overload Capability	: 135% of Rated current for 15 minutes
Design Corresponding to	: UL1283, CSA 22.2 No.8-13 and IEC 60939
Flammability corresponding to	: UL 94 V-0
Temperature range	: -25°C to +85°C
Climatic Category	: 25/85/21
Enclosure Material	: Aluminium

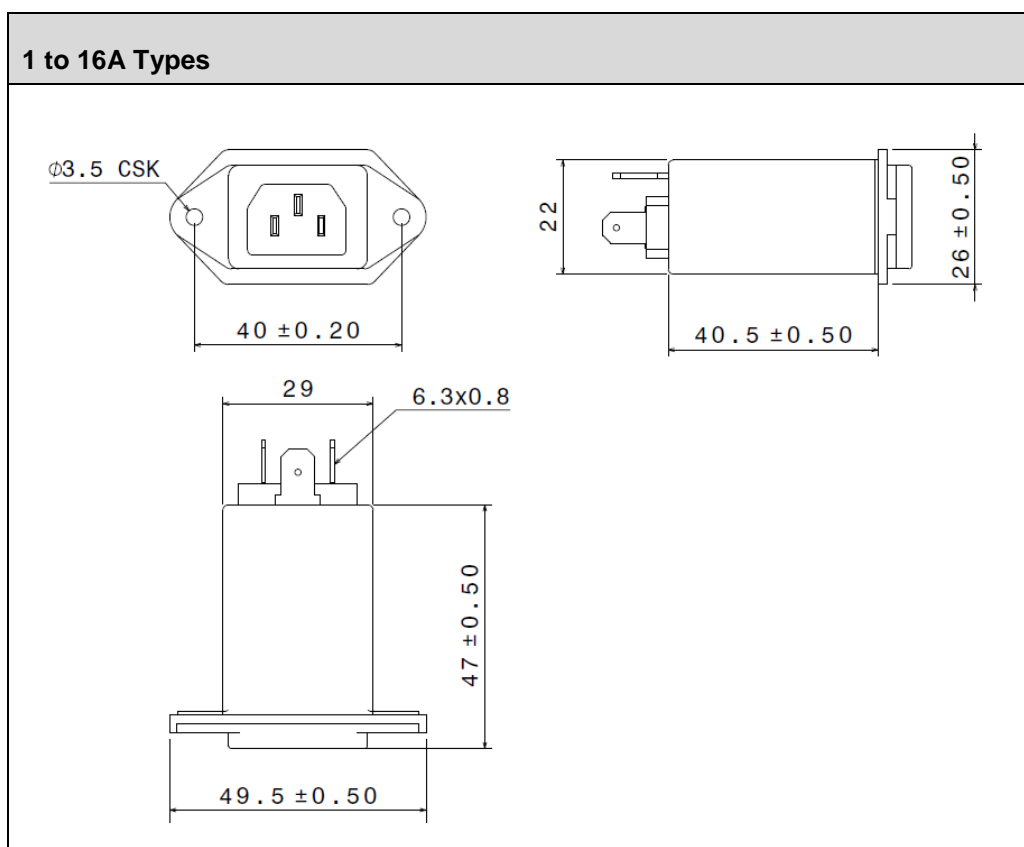
Images shown above are just for reference

Selection Table

Part Number	Ordering Code	Rated Current @40°C	Leakage Current @250VAC (mA)	Termination	Weight (Grams)
MF140 - 01	S140000001S	1A	0.34	Fastons - 6.3x0.8	60
MF140 - 02	S140000002S	2A	0.34	Fastons - 6.3x0.8	60
MF140 - 03	S140000003S	3A	0.34	Fastons - 6.3x0.8	60
MF140 - 06	S140000006S	6A	0.34	Fastons - 6.3x0.8	60
MF140 - 10	S140000010S	10A	0.34	Fastons - 6.3x0.8	60
MF140 - 15	S140000015S	15A	0.34	Fastons - 6.3x0.8	60
MF140 -16	S140000016S	16A	0.34	Fastons - 6.3x0.8	60

Customized filters are provided on request.

Mechanical Drawing



All dimensions in mm; Tolerances according to ISO2768-m

Insertion Loss – (Common Mode)

