

Single Phase EMI Filter – MF310

IEC Inlet with fuse type

Description

These series range of IEC Inlet type filters with fuse are designed to suppress undesirable electrical disturbances in Power Lines. They limit the amplitude of interfering voltages on AC power lines and prevent them from propagating into or out of the filtered equipment.

Features

- Integral IEC Connector
- Excellent performance/size ratio
- Single/Double Fuse Option
- Rated current up to 10A
- Medical versions available
- High conducted attenuation performance

Applications

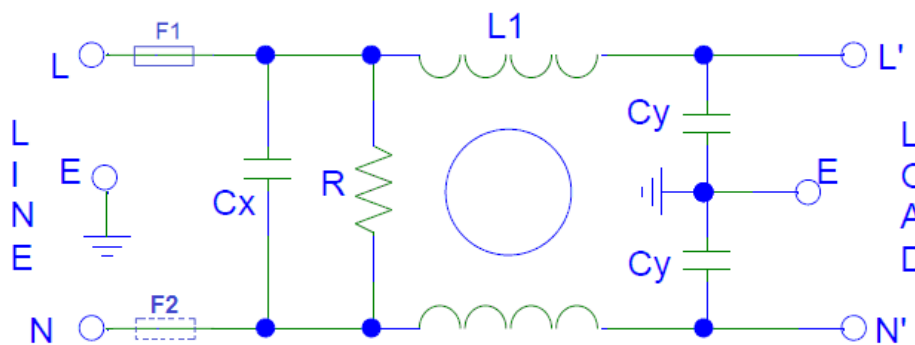
- Electrical & Electronic Equipment's
- Testing & Measurement Equipments



Safety Approvals & Marking



Typical circuit Diagram



Technical Specifications

Maximum Continuous Operating Voltage	: 250VAC
Operating Frequency	: 50/60Hz
Current ratings	: 1A to 10A @40°C
High Potential test voltage	: L to G 2250VDC for 1 Minute L to L 1450VDC for 1 Minute
Overload Capability	: 135% of Rated current for 15 minutes
Design Corresponding to	: UL1283, CSA 22.2 No.8-13 and IEC 60939
Flammability corresponding to	: UL 94 V-0
Temperature range	: -25°C to +85°C
Climatic Category	: 25/85/21
Enclosure Material	: Aluminium

Images shown above are just for reference

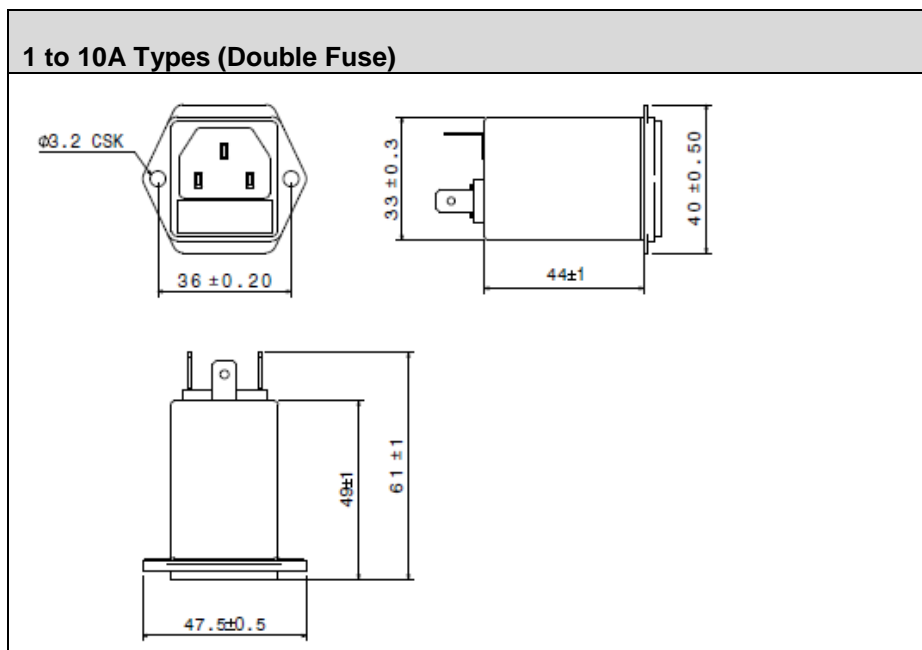
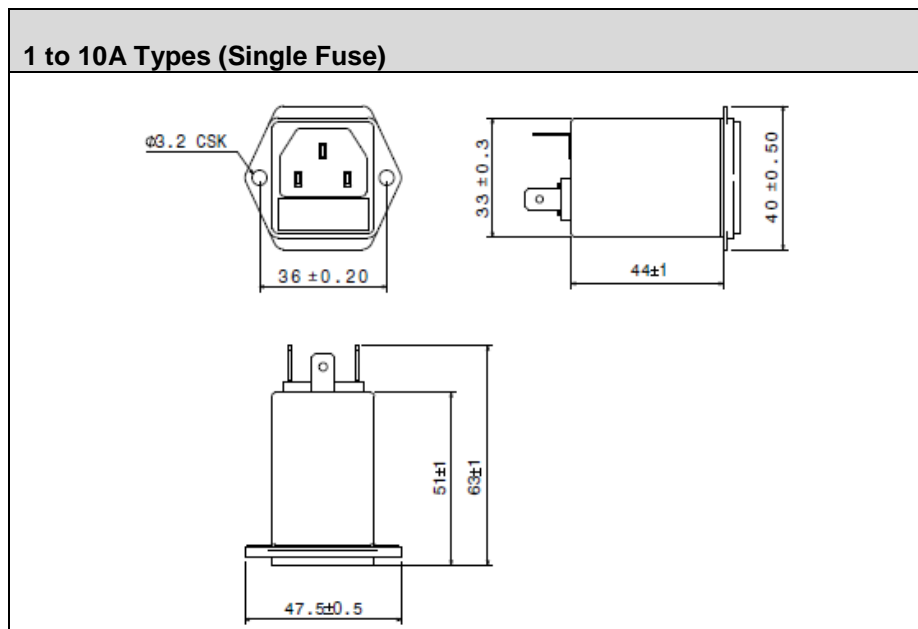
Selection Table

Part Number	Ordering Code	Rated Current @40°C	Leakage Current @250VAC (mA)	Termination	Weight (Grams)
MF310 - 01	S310SF0001D	1A	0.34	Fastons 6.3 X 0.8mm	60
MF310 - 03	S310SF0003D	3A	0.34	Fastons 6.3 X 0.8mm	60
MF310 - 06	S310SF0006D	6A	0.34	Fastons 6.3 X 0.8mm	60
MF310 - 10	S310SF0010D	10A	0.34	Fastons 6.3 X 0.8mm	60

Note:

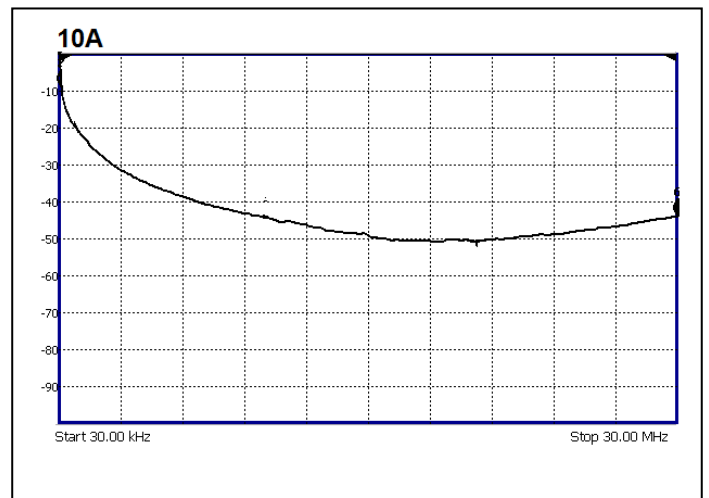
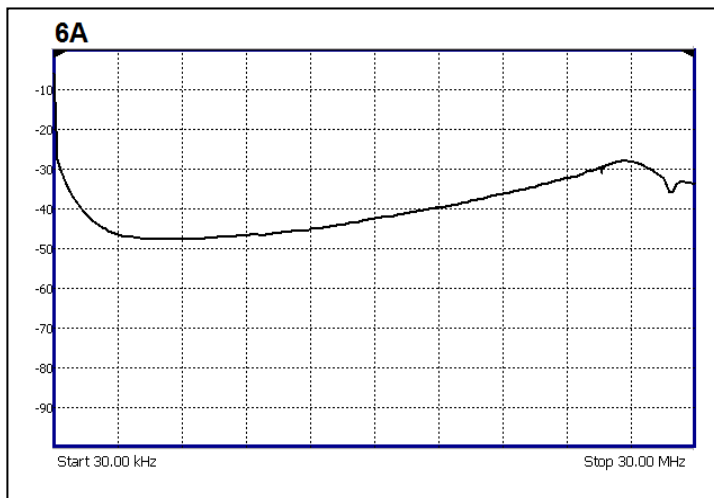
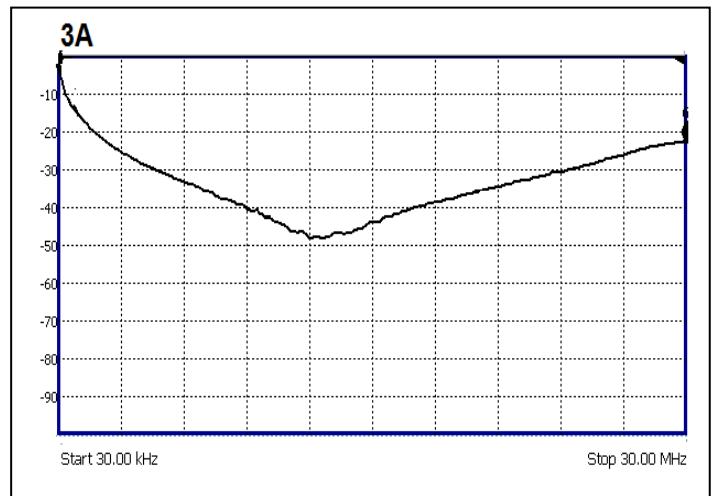
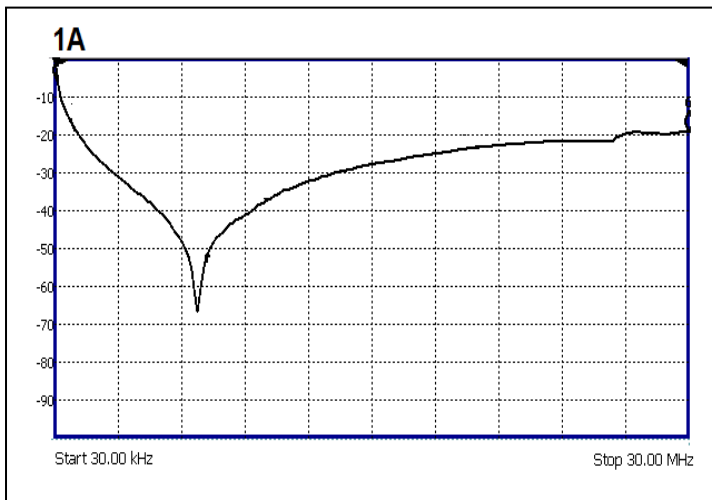
Ordering code mentioned above is for single fuse, for Dual fuse replace SF to DF in the Ordering Code [Ex: For 1A with Dual Fuse: S310DF0001D]

Mechanical Drawing



All dimensions in mm; Tolerances according to ISO2768-m

Insertion Loss – (Common Mode)



EMI Solutions Private Ltd.

#237-A5, Bommasandra Industrial Area, Bangalore-560099,
Marketing: +91 80 27836880, Email: marketing@emisindia.com