

Description

Cost saving plastic housing designed for standard applications. Protection against interference voltage from the mains interferences generated in the equipment are strongly attenuated.

Features

- PCB Mountable Filters
- Rated currents up to 10A
- Medical versions available
- High conducted attenuation performance
- Plastic housing for standard applications
- Protection against interference voltage
- Cost Effective

Applications

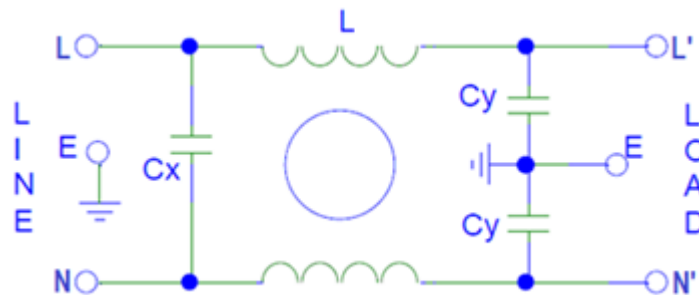
- SMPS
- Monitor
- PLC
- Weighing scales
- Electronic instrument
- PC periphery
- Microwave Equipment
- Office Automation Equipment



Approvals & Compliance



Typical circuit Diagram



Technical Specifications

Maximum Continuous Operating Voltage	: 250VAC
Operating Frequency	: 50/60Hz
Current ratings	: 1A to 10A @40°C
High Potential test voltage	: L to G 2250Vdc for 1 Minute L to L 1450Vdc for 1 Minute
Overload Capability	: 135% of Rated current for 15 minutes
Design Corresponding to	: UL1283, CSA 22.2 No.8-13 and IEC 60939
Flammability corresponding to	: UL 94 V-0
Temperature range	: -25°C to +85°C
Climatic Category	: 25/85/21

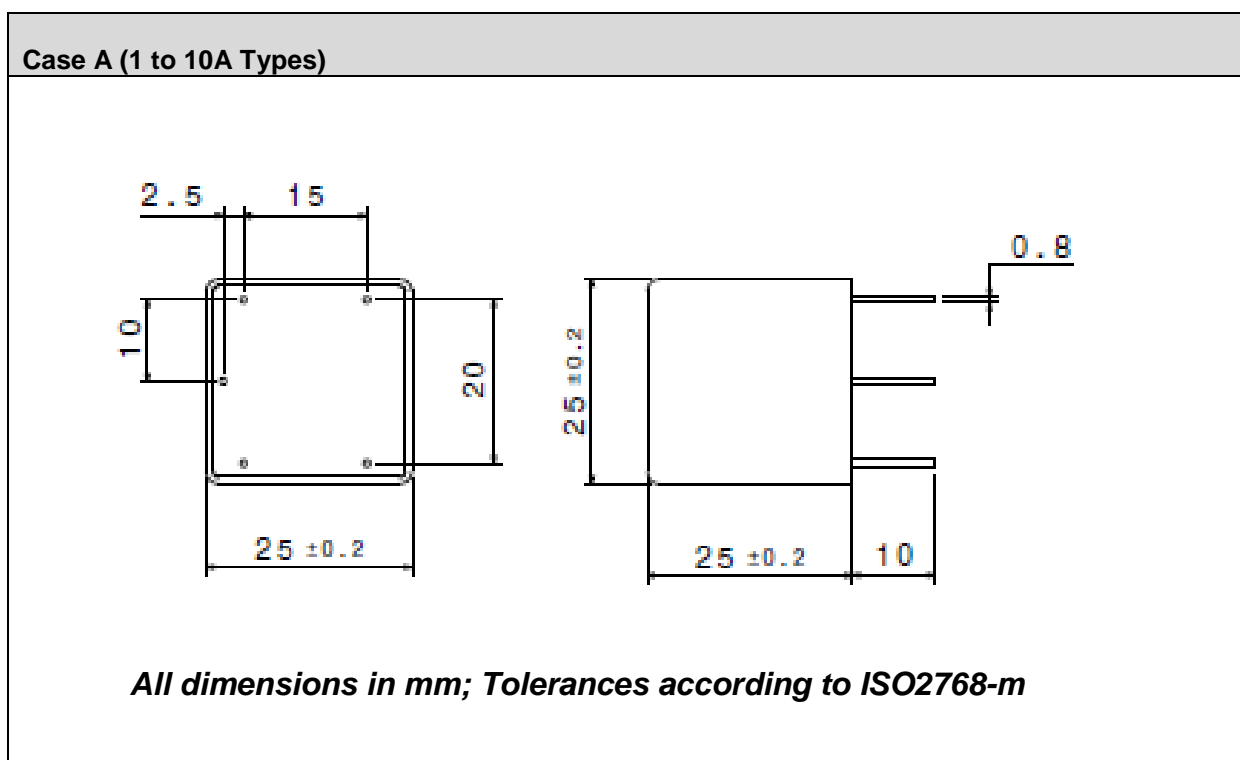
Image shown above is just for reference

Selection Table

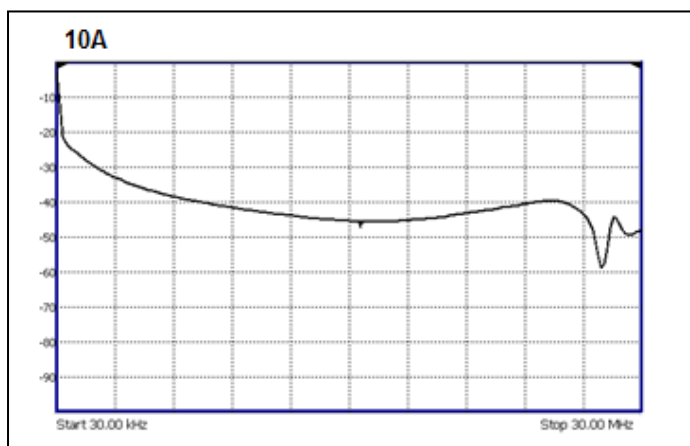
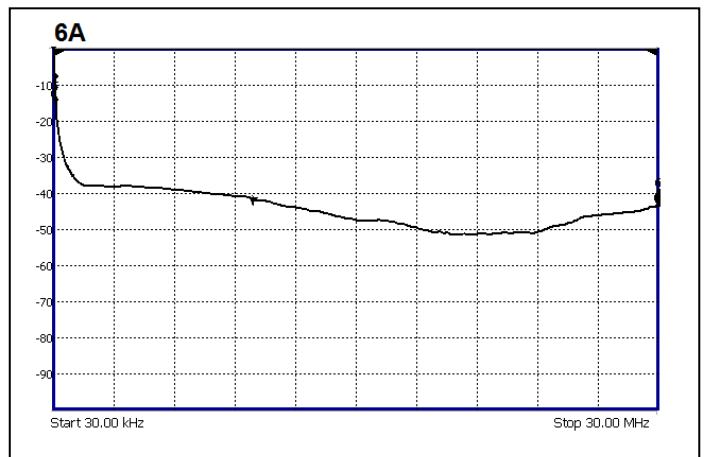
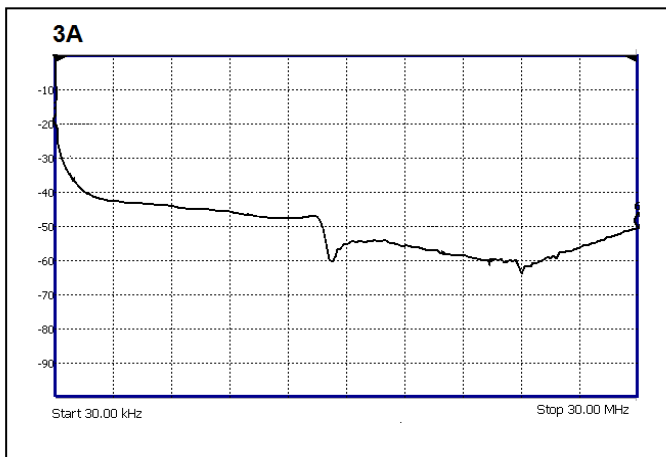
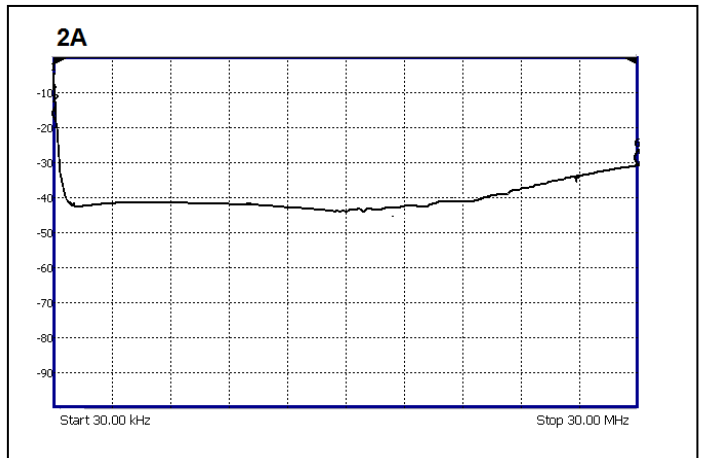
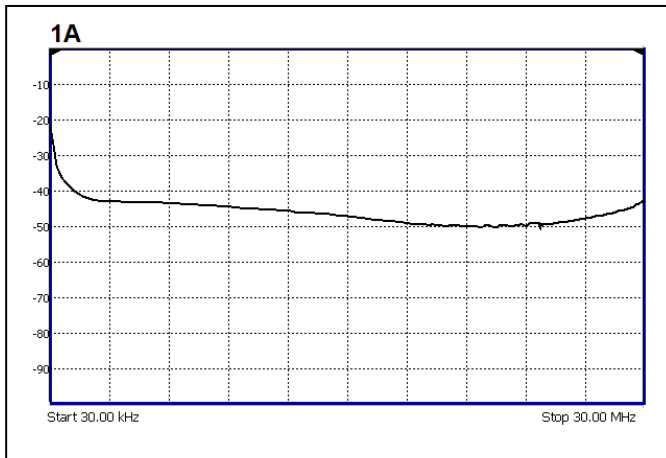
Part Number	Ordering Code	Rated Current @40°C	Leakage Current @250VAC/50Hz (mA)	Termination	Weight (Grams)
MF530A – 01	S530A00001L	1A	0.34	0.8mm Lead	30
MF530A – 02	S530A00002L	2A	0.34	0.8mm Lead	30
MF530A – 03	S530A00003L	3A	0.34	0.8mm Lead	30
MF530A - 06	S530A00006L	6A	0.34	0.8mm Lead	30
MF530A - 10	S530A00010L	10A**	0.34	1mm Lead	30

Note: ** Not covered under CSA/NEMKO

Mechanical Drawing



Insertion Loss – (Common Mode)



EMI Solutions Private Ltd

#237-A5, Bommasandra Industrial Area, Bangalore-560099,
Marketing: +91 80 27836880, Email: marketing@emisindia.com

www.emisindia.com

3 | Page

EMIS follows a policy of continuous improvement and reserves the right to change specifications without notice.