


**DATASHEET**

# SINGLE PHASE EMI FILTER – MF150 IEC INLET WITH FUSE (MEDICAL VERSION)

**Description**

These series range of IEC Inlet type filters with fuse are designed to suppress undesirable electrical disturbances in Power Lines. They limit the amplitude of interfering voltages on AC power lines and prevent them from propagating into or out of the filtered equipment.

**Technical Specifications**

Maximum Continuous Operating Voltage	250VAC
Operating Frequency	50/60Hz
Current ratings	1A to 10A @40°C
High Potential test voltage	L to G 2250VDC for 1 Minute L to L 1450VDC for 1 Minute
Overload Capability	135% of Rated current for 15 minutes
Design Corresponding to	UL1283, CSA 22.2 No.8-13 and IEC 60939
Flammability corresponding to	UL 94 V-0
Temperature range	-25°C to +85°C
Climatic Category	25/85/21
Enclosure Material/Finish	Aluminium

**Approval & Compliance**

**Features**

- Integral IEC Connector
- Excellent performance/size ratio
- Single/Double Fuse Option
- Rated current up to 10A
- Ultra-low leakage current

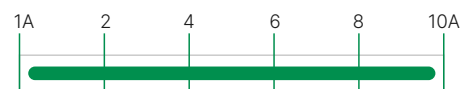
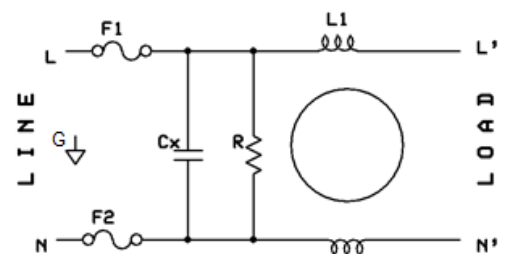
**Applications**

- Electrical & Electronic Equipment's
- Testing & Measurement Equipments

**Performance Indicator**

Standard	High	Very High
█		

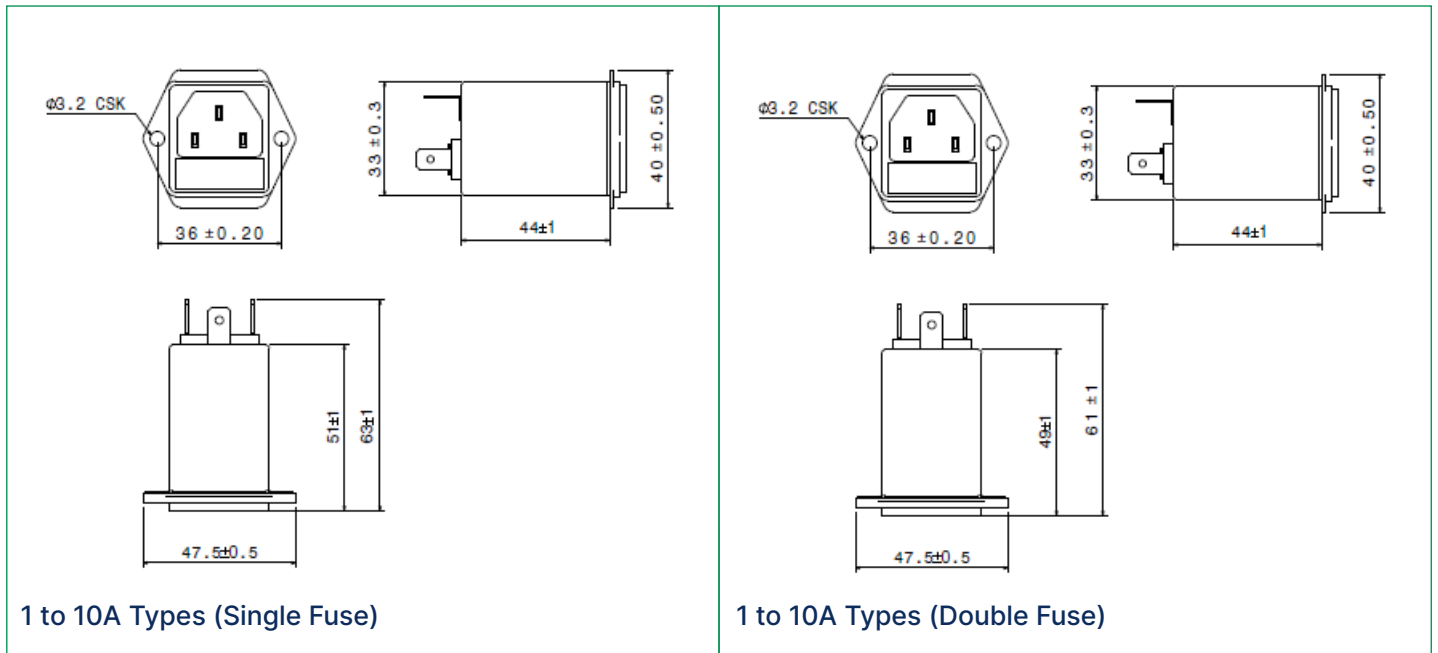
Rated current [A]


**Typical circuit Diagram**


## Ordering Code Information

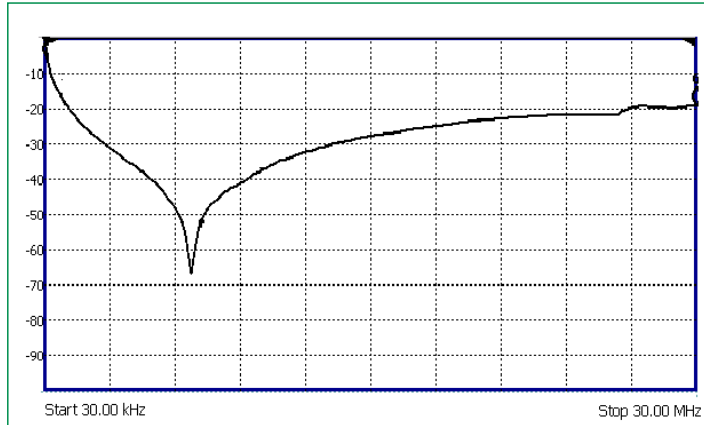
Part Number	Ordering Code (Single Fuse)	Ordering Code (Dual Fuse)	Rated Current @40°C	Termination	Weight (Grams)
MF150	E101034-2	E101035-2	1A	Fastons 6.3 X 0.8mm	75
MF150	E101034-3	E101035-3	3A	Fastons 6.3 X 0.8mm	75
MF150	E101034-4	E101035-4	6A	Fastons 6.3 X 0.8mm	75
MF150	E101034-5	E101035-5	10A	Fastons 6.3 X 0.8mm	75

## Mechanical Drawing

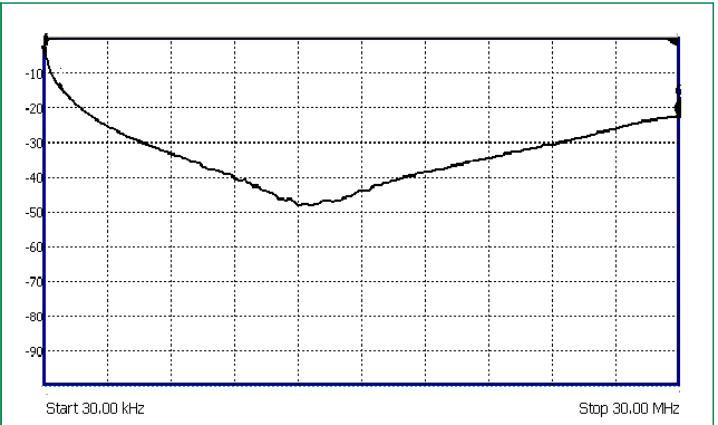


Note: All dimensions in mm; Tolerances according to ISO2768-m

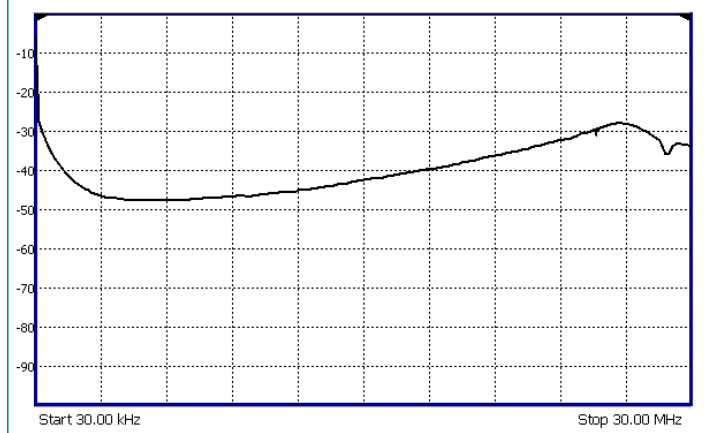
## Insertion Loss – (Common Mode)



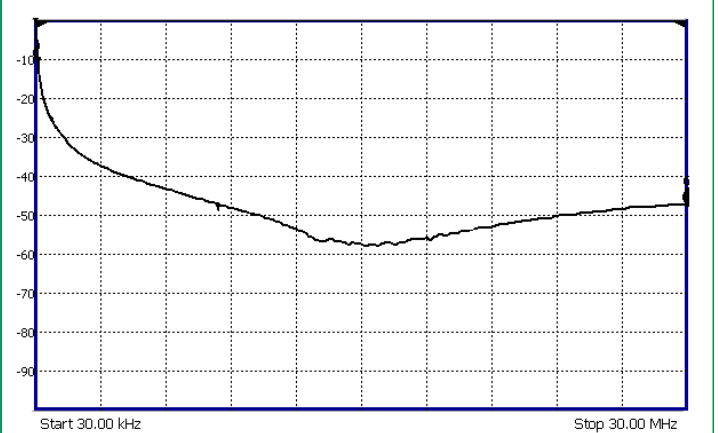
1A



3A



6A



10A